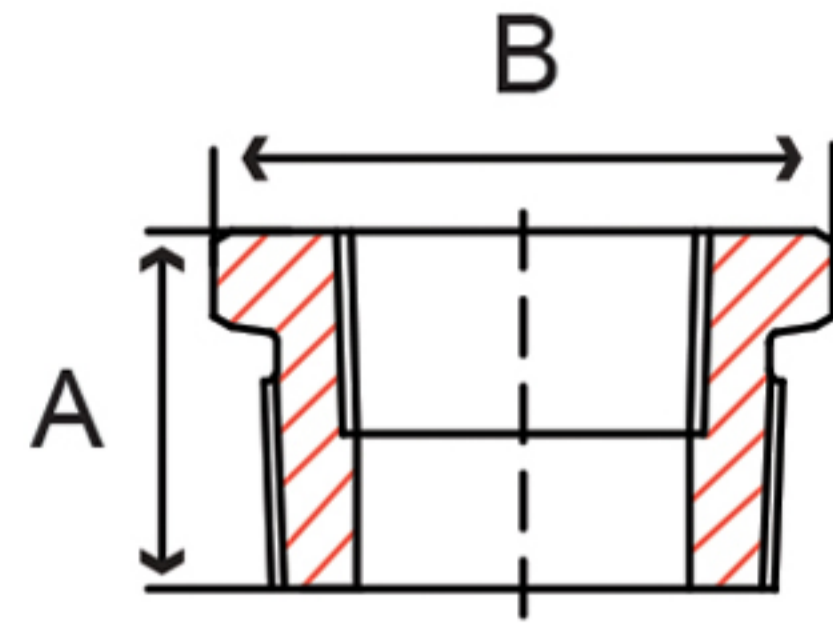


Fig. 42HB3 – Hex Bushing



Size IN	Part Number	A IN	B IN	Master	Weight LB
1/4 x 1/8	42HB3002001	0.56	0.62	600	0.02
3/8 x 1/8	42HB3003001	0.66	0.69	500	0.02
3/8 x 1/4	42HB3003002	0.66	0.69	500	0.02
1/2 x 1/8	42HB3004001	0.75	0.88	400	0.06
1/2 x 1/4	42HB3004002	0.75	0.88	400	0.06
1/2 x 3/8	42HB3004003	0.75	0.88	400	0.06
3/4 x 1/8	42HB3006001	0.84	1.06	200	0.1
3/4 x 1/4	42HB3006002	0.84	1.06	200	0.1
3/4 x 3/8	42HB3006003	0.84	1.06	200	0.1
3/4 x 1/2	42HB3006004	0.84	1.06	200	0.1
1 x 1/8	42HB3010001	1.00	1.38	100	0.2
1 x 1/4	42HB3010002	1.00	1.38	100	0.2
1 x 3/8	42HB3010003	1.00	1.38	100	0.2
1 x 1/2	42HB3010004	1.00	1.38	100	0.2
1 x 3/4	42HB3010006	1.00	1.38	100	0.2
1-1/4 x 1/8	42HB3012001	1.09	1.75	70	0.8
1-1/4 x 1/4	42HB3012002	1.09	1.75	70	0.3
1-1/4 x 3/8	42HB3012003	1.09	1.75	70	0.3
1-1/4 x 1/2	42HB3012004	1.09	1.75	70	0.5
1-1/4 x 3/4	42HB3012006	1.09	1.75	70	0.5
1-1/4 x 1	42HB3012010	1.09	1.75	70	0.5
1-1/2 x 1/8	42HB3014001	1.12	2.00	50	1.3
1-1/2 x 1/4	42HB3014002	1.12	2.00	50	1.3
1-1/2 x 3/8	42HB3014003	1.12	2.00	50	1.3
1-1/2 x 1/2	42HB3014004	1.12	2.00	50	1.0
1-1/2 x 3/4	42HB3014006	1.12	2.00	50	0.8
1-1/2 x 1	42HB3014010	1.12	2.00	50	0.7
1-1/2 x 1-1/4	42HB3014012	1.12	2.00	50	0.7
2 x 1/4	42HB3020002	1.22	2.50	25	0.8
2 x 3/8	42HB3020003	1.22	2.50	25	1.8
2 x 1/2	42HB3020004	1.22	2.50	25	1.7
2 x 3/4	42HB3020006	1.22	2.50	25	1.6
2 x 1	42HB3020010	1.22	2.50	25	1.5
2 x 1-1/4	42HB3020012	1.22	2.50	25	0.9
2 x 1-1/2	42HB3020014	1.22	2.50	25	0.9
2-1/2 x 1/2	42HB3024004	1.44	3.00	15	1.1
2-1/2 x 3/4	42HB3024006	1.44	3.00	15	1.1
2-1/2 x 1	42HB3024010	1.44	3.00	15	1.1
2-1/2 x 1-1/4	42HB3024012	1.44	3.00	15	1.1
2-1/2 x 1-1/2	42HB3024014	1.44	3.00	15	1.3
2-1/2 x 2	42HB3024020	1.44	3.00	15	1.3
3 x 1/4	42HB3030002	1.53	3.50	10	5.3
3 x 1/2	42HB3030004	1.53	3.50	10	5.2
3 x 3/4	42HB3030006	1.53	3.50	10	4.6
3 x 1	42HB3030010	1.53	3.50	10	5.0
3 x 1-1/4	42HB3030012	1.53	3.50	10	3.4
3 x 1-1/2	42HB3030014	1.53	3.50	10	3.1
3 x 2	42HB3030020	1.53	3.50	10	2.7
3 x 2-1/2	42HB3030024	1.53	3.50	10	2.3
4 x 1	42HB3040010	1.75	4.62	5	9.4
4 x 1-1/4	42HB3040012	1.75	4.62	5	8.5
4 x 1-1/2	42HB3040014	1.75	4.62	5	7.6
4 x 2	42HB3040020	1.75	4.62	5	6.7
4 x 2-1/2	42HB3040024	1.75	4.62	5	5.7
4 x 3	42HB3040030	1.75	4.62	5	4.7